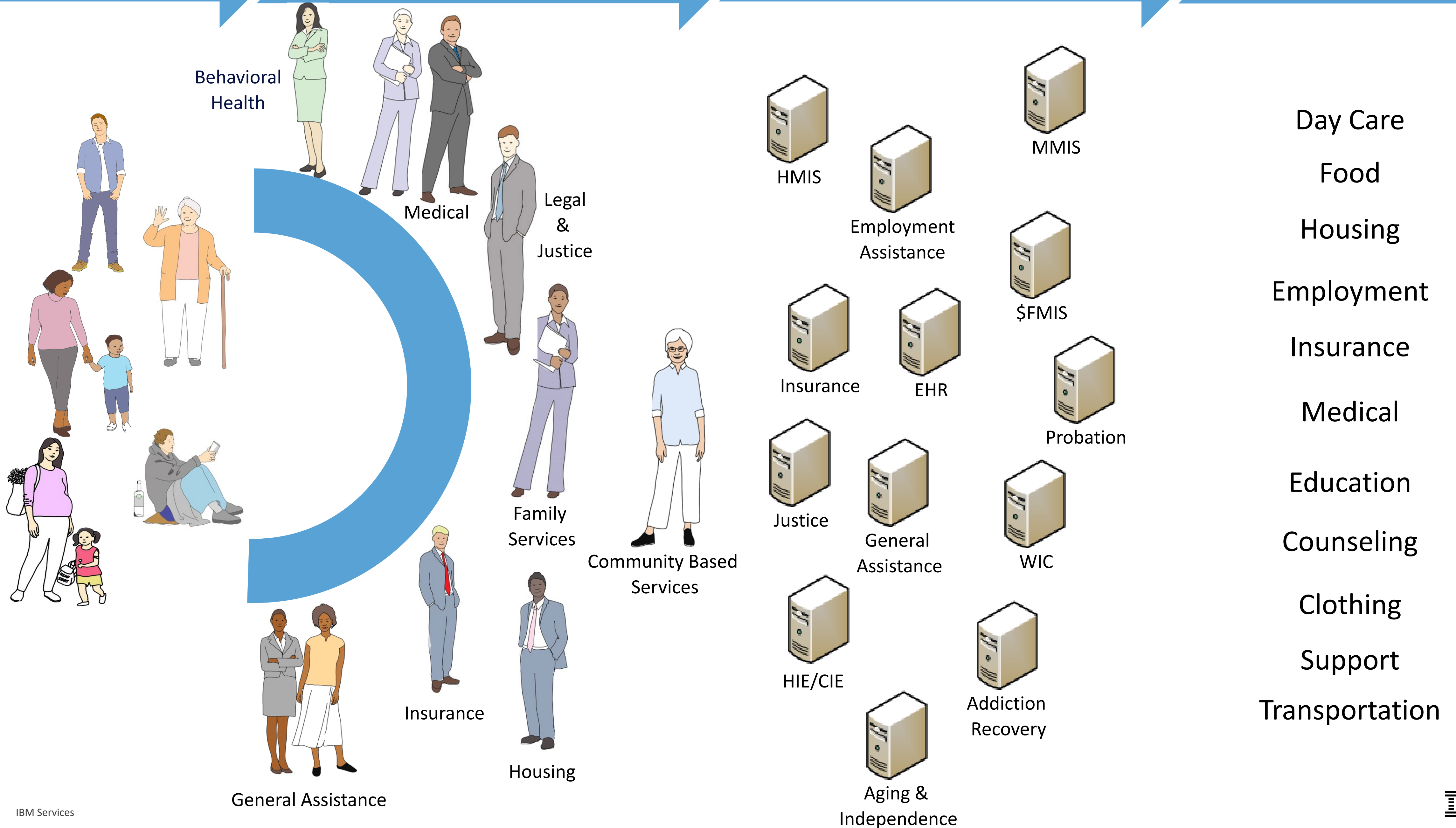


Clients

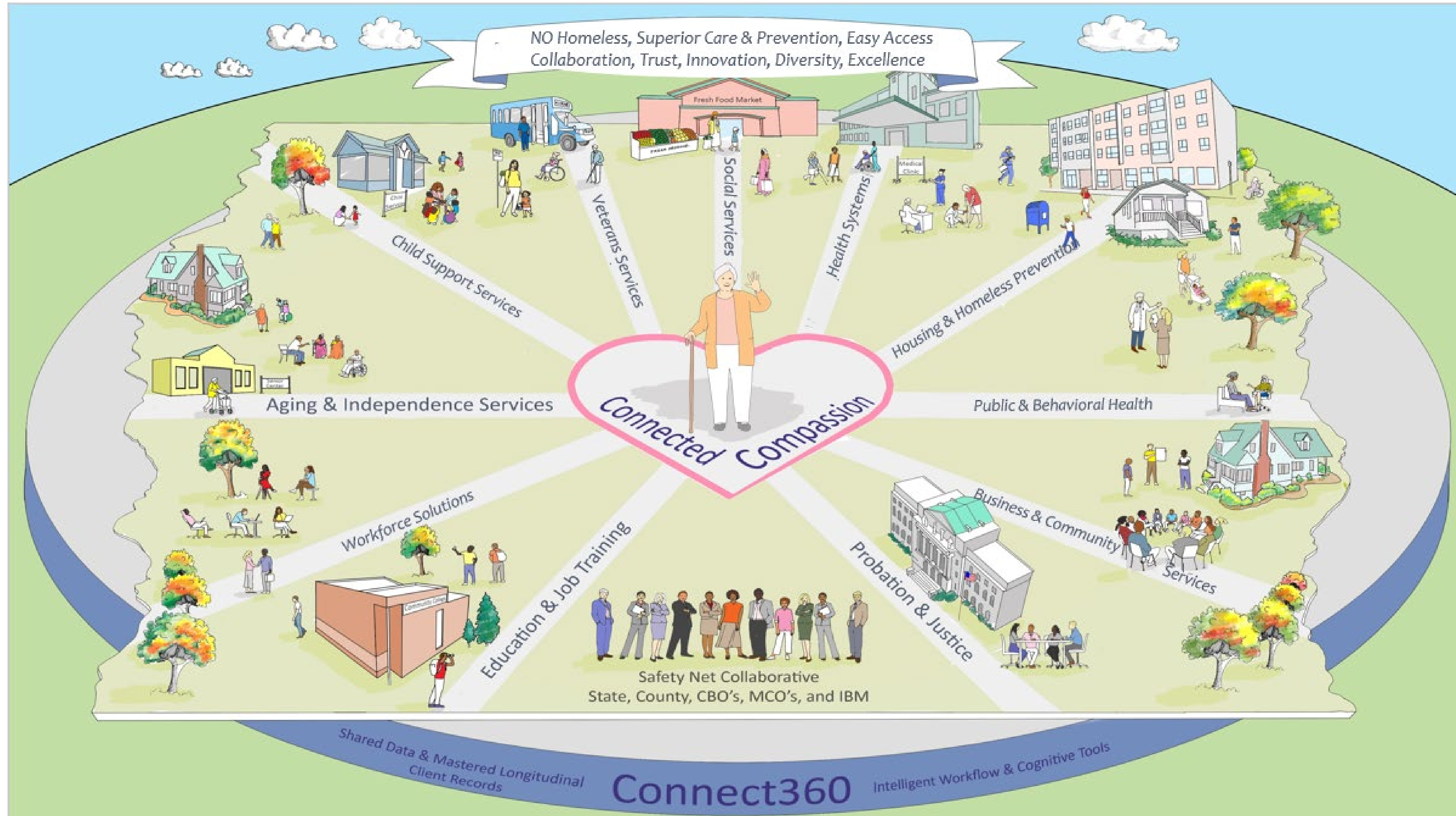
Providers & Programs

Data & Systems

Services



# A County Integrated System of Care



# Benefit Assistance Data

Virtual Client Record: Kumar, Hari

\*\*\*\*\*, 2/5/1984, \*\*\*\*\* Registered in Watson Care Manager

- Demographics
- Extended Demographics
- Benefit Assistance Data
- Programs**
- Eligibility Profile
- Justice Data
- Substance Use Disorder Data
- Physical Health Data
- Behavioral Health Data
- Housing Data

Close

Virtual Client Record: Kumar, Hari

Benefit Assistance Data

Programs

CASE	TYPE	STATUS	START	END
4066	SSIP	active	2018-09-13	2019-12-13
4066	Special Circumstances	active	2018-09-13	2019-12-13
4066	Temporary Homeless Assistance	active	2018-09-13	2019-10-13
4066	TANF	active	2018-09-13	2019-10-13
4066	Retro Minor Consent	active	2018-09-13	2019-10-13
4066	WORK PROGRAM	active	2018-09-13	2019-10-13
4066	Diversion	active	2018-09-13	2019-10-13

Eligibility Profile

CASH PROGRAM	HAS MEDI-CAL	SSI/SSP RECIPIENT
YES	FALSE	YES
HAS FOOD STAMPS		
FALSE		

- Justice Data
- Substance Use Disorder Data
- Physical Health Data

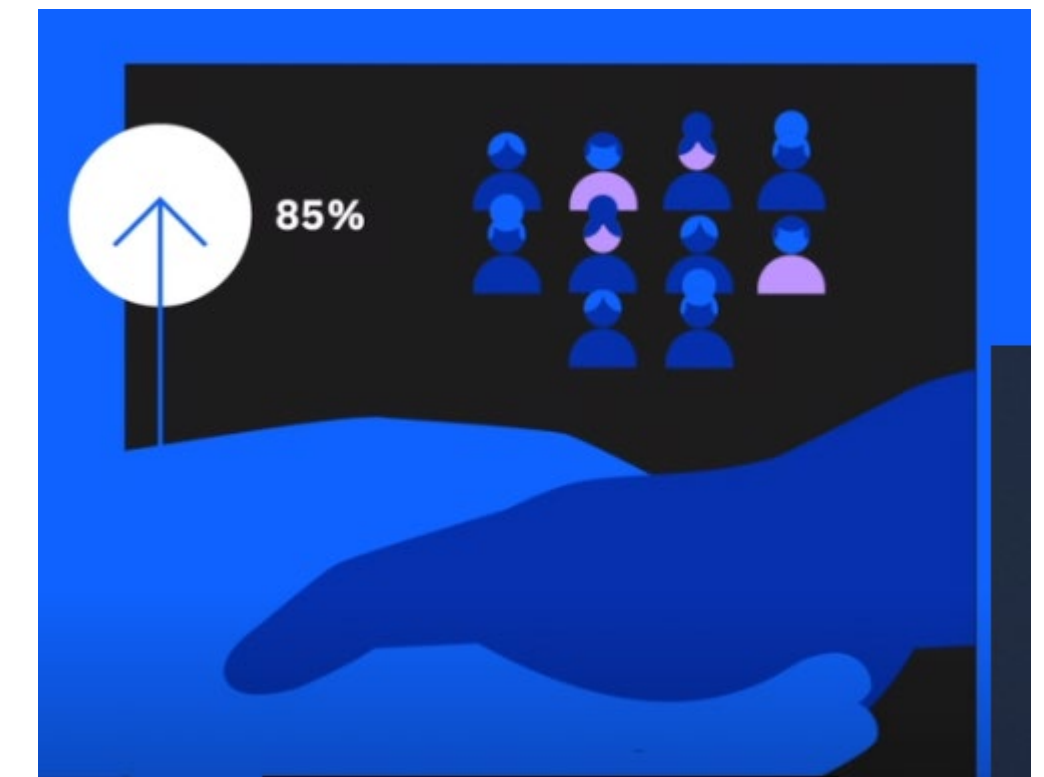
Close

# Sonoma Outcomes

6,545 persons engaged

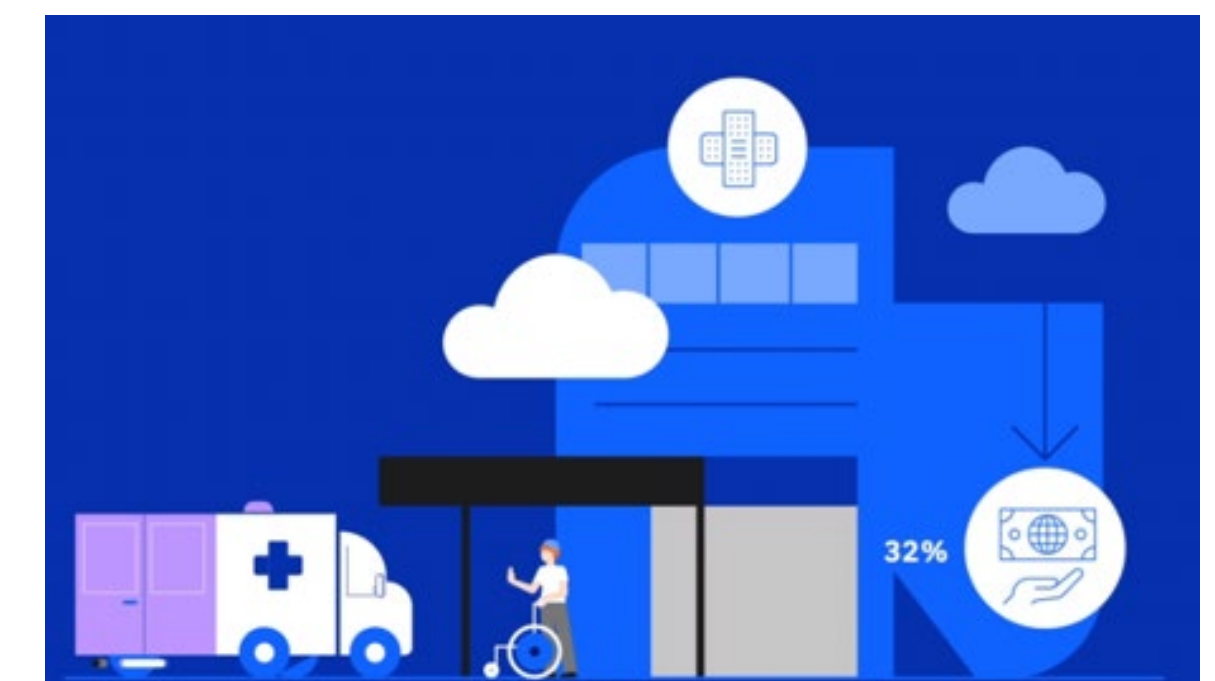
Emergency Rapid Response (2017, 2019, 2020)	COVID-19
High Needs Homeless	Homeless Encampment
Mental Health Diversion	Emergency Department High Utilizers

85% Received Social Services Needed



72% Housed

32% decrease in hospital costs for high ED utilizers



# Reduction in Sonoma County recidivism through ACCESS Sonoma and the Mental Health Diversion Cohort

The Sonoma County Public Defender started by saying,

***“This is unbelievable. We’ve had people that were ten-time repeat offenders; they haven’t repeated once. They haven’t been picked up once. Our recidivism is way down. All the people who were enrolled in this cohort, none of them have had jail time since they started participating with the IMDT and the mental health diversion cohort.”***

The Sonoma County District Attorney has recommended other cohorts to connect with high-risk individuals prior to going to jail with the idea of intervening before being charged.

We are also targeting transitional stage youth that offended as youth but are incarcerated as adults as one of our next cohorts.

*Reported by Carolyn Staats, Director of Innovation Information Systems Division Sonoma County to the National Association of Counties (NACo)*



Impact of the Safety Net Collaborative, Multi-discipline Teams and ACCESS Sonoma

# Contact Information

*Ken Wolsey* – [kewolsey@us.ibm.com](mailto:kewolsey@us.ibm.com) – 858-366-2587

*Karen Zeiler Snyder* – [karen.zeiler@ibm.com](mailto:karen.zeiler@ibm.com) – 850-510-4850