



*A Collaborative Approach to Bear Wise Trash Management*

**Mike Orlando, Assistant Bear Program Coordinator**

**Florida Fish and Wildlife Conservation Commission**

# Florida's Conflict Wildlife- Bears



**Little or no management**



Sustainable coexistence

Abundant



**Conflict management**

Over-exploited

Rare

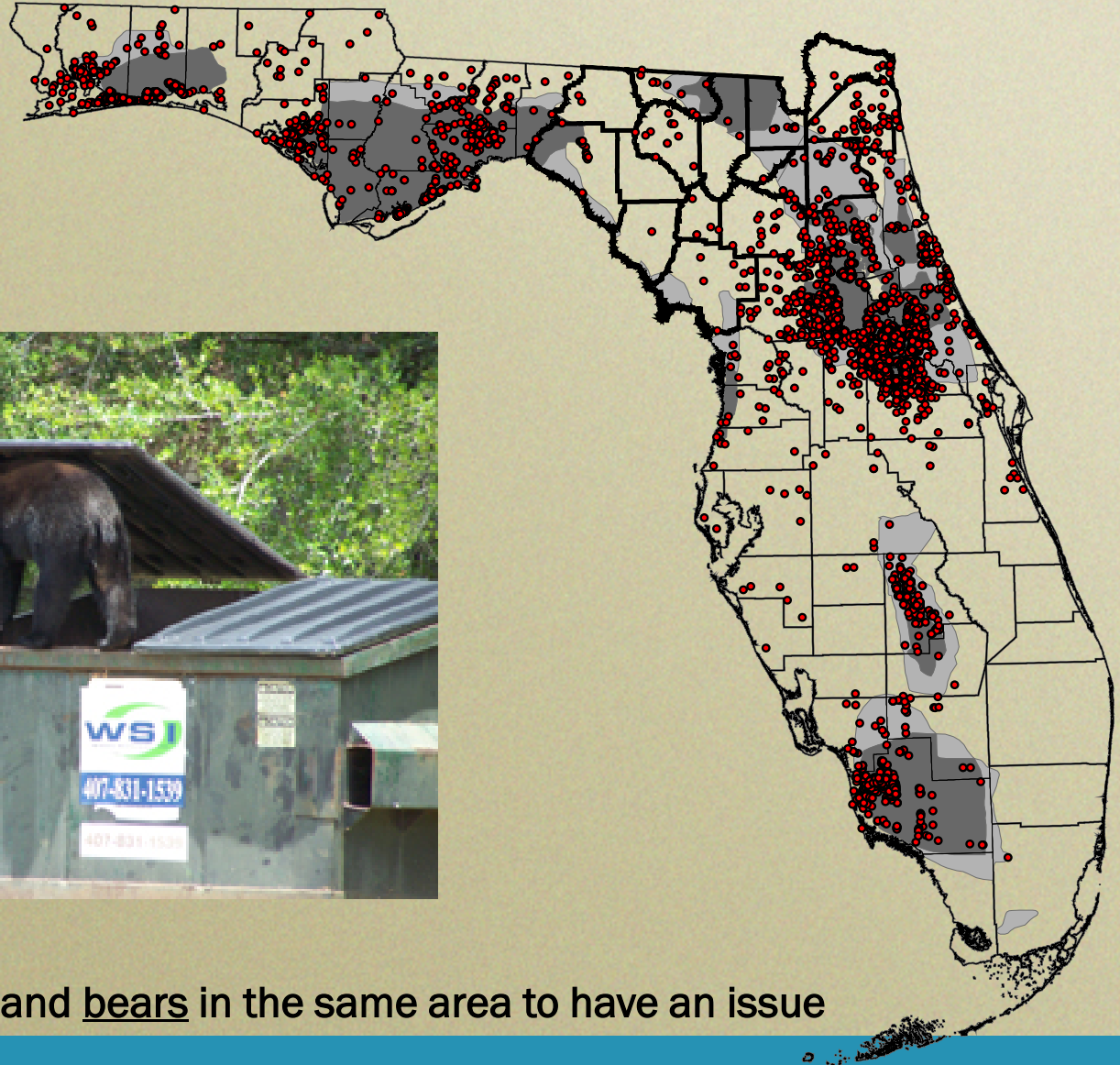
**Recovery management**

Rebounding

More numerous



# Bear Conflicts



You need humans and bears in the same area to have an issue

**Good bear**

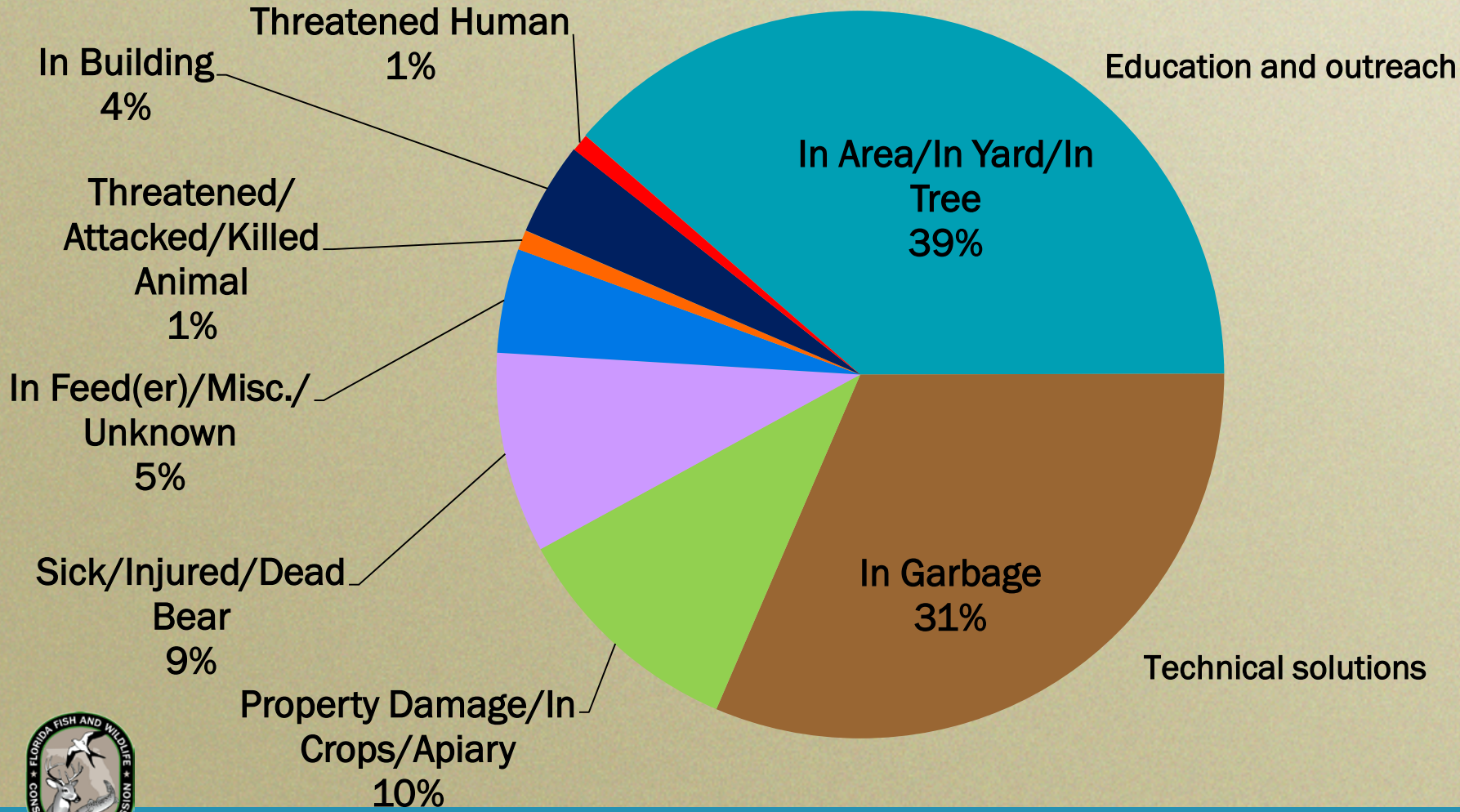


**Bad cat**



# Human/Bear Conflicts 1990 - 2015

(n = 49,788)



# Attractants



# Garbage (Commercial)

- Switch out plastic doors with steel doors
- Clip on side

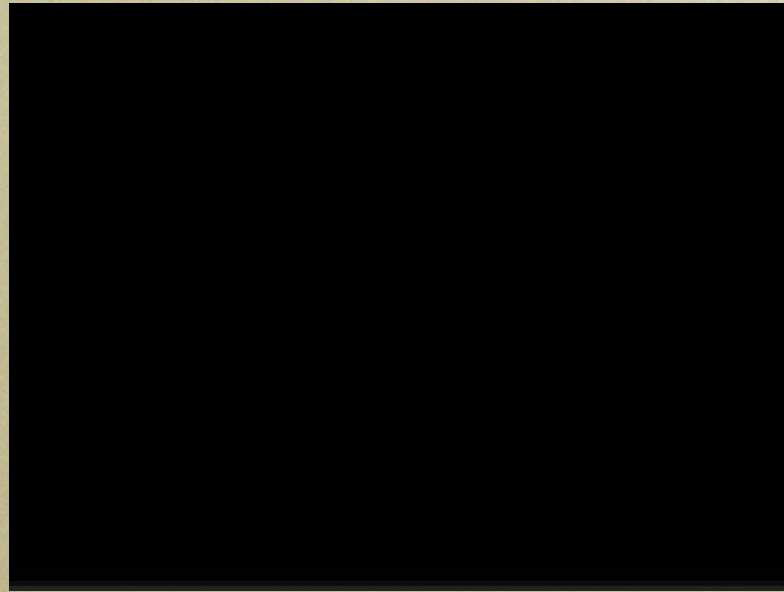


# Garbage (Commercial)





# Securing Attractants



# Securing Attractants



# Garbage is the number one cause of conflicts



# Many Options to Secure Trash



Bear-Resistant Trashcan



Keep in garage/shed



Electric fence



Trashcan shed



Modified trashcan



# Not just a Florida issue



Locale	State/Province	Type	Year	Households
Juneau	Alaska	City	1987	12,187
Sitka	Alaska	City	2008	3,545
Canmore	Alberta	Town	2001	5,176
Crowsnest Pass	Alberta	City	2007	2,586
Banff	Alberta	City	1999	2,565
British Columbia	British Columbia	Province	1999	1,885,785
Madera	California	County	1995	43,317
Placer	California	County	2001	132,627
Snowmass Village	Colorado	Town	1999	1,327
Pitkin	Colorado	County	2000	8,152
Steamboat Springs	Colorado	City	2001	5,201
Cordillera	Colorado	HOA	2002	602
Eagle	Colorado	County	2007	19,236
Vail	Colorado	City	2007	2,604
Hurlburt Air Field	Florida	Military	2010	3,473
Wingfield North	Florida	HOA	2014	115
West Yellowstone	Montana	Town	2000	617
Gatlinburg	Tennessee	City	1998	1,681
Teton	Wyoming	County	2008	175



# Partnerships and Incentives

- Working with counties with the most conflicts
- Conserve Wildlife plate grants (\$350,000)
- Legislative budget request (\$500,000)  
(60% must go to cities or counties with Bear Wise ordinances)



# The Good News is - It Works!

2014

*SOUTHEASTERN NATURALIST*

13(1):26–39

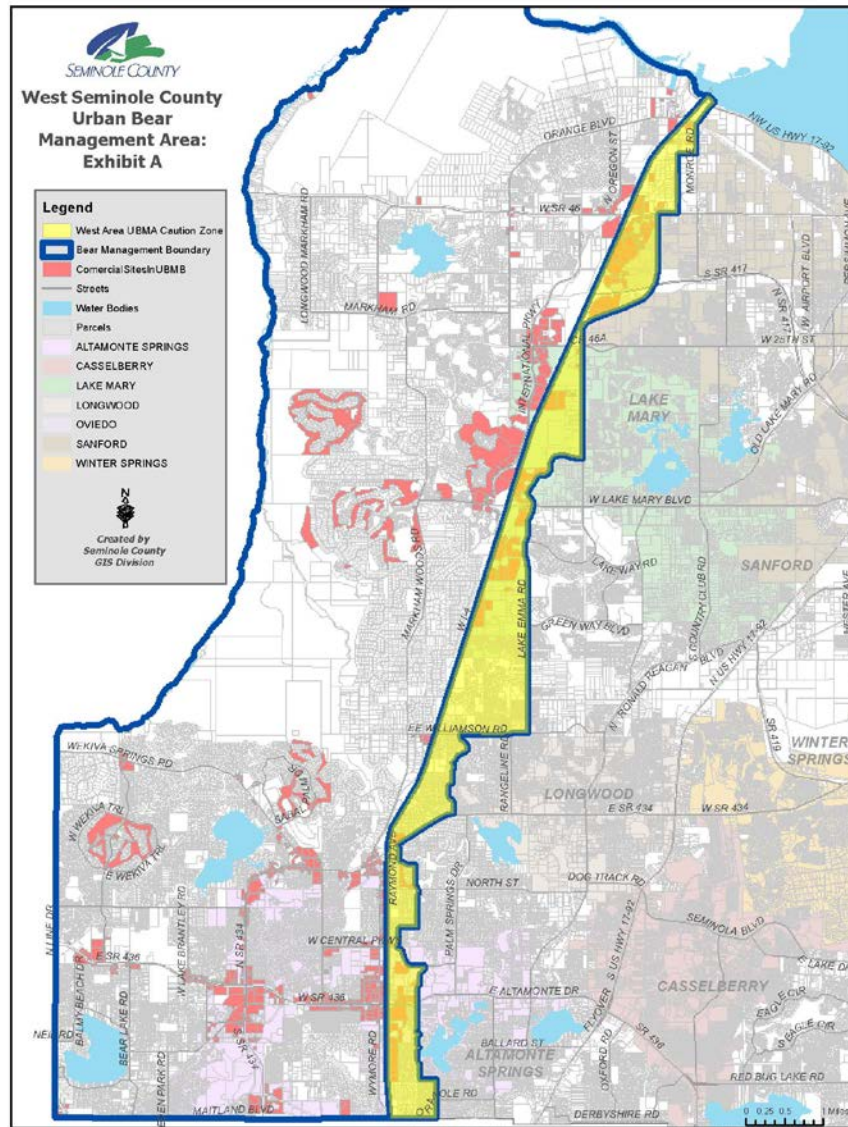
## Testing Bear-Resistant Trash Cans in Residential Areas of Florida

	<b>Bear Interactions Before</b>	<b>Bear Interactions After</b>	<b>Reduction</b>
<b>Modified Trashcans</b>	<b>71%</b>	<b>32%</b>	<b>55%</b>
<b>Bear-Resistant Trashcans</b>	<b>97%</b>	<b>5%</b>	<b>95%</b>



# Seminole County Example

- Concentrated West of I-4
- Approx. 22,500 households
- Commercial dumpsters
- Human-conflict calls are down
- From January to June 2015 we trapped 21 bears
- From January to June 2016 we trapped 7





# Shared Responsibility

## FWC Role

- Educate the public
- Provide technical assistance
- Remove conflict bears
- Manage bear populations
- Enforce feeding prohibitions
- Work with communities on being Bear Wise



## Local Role

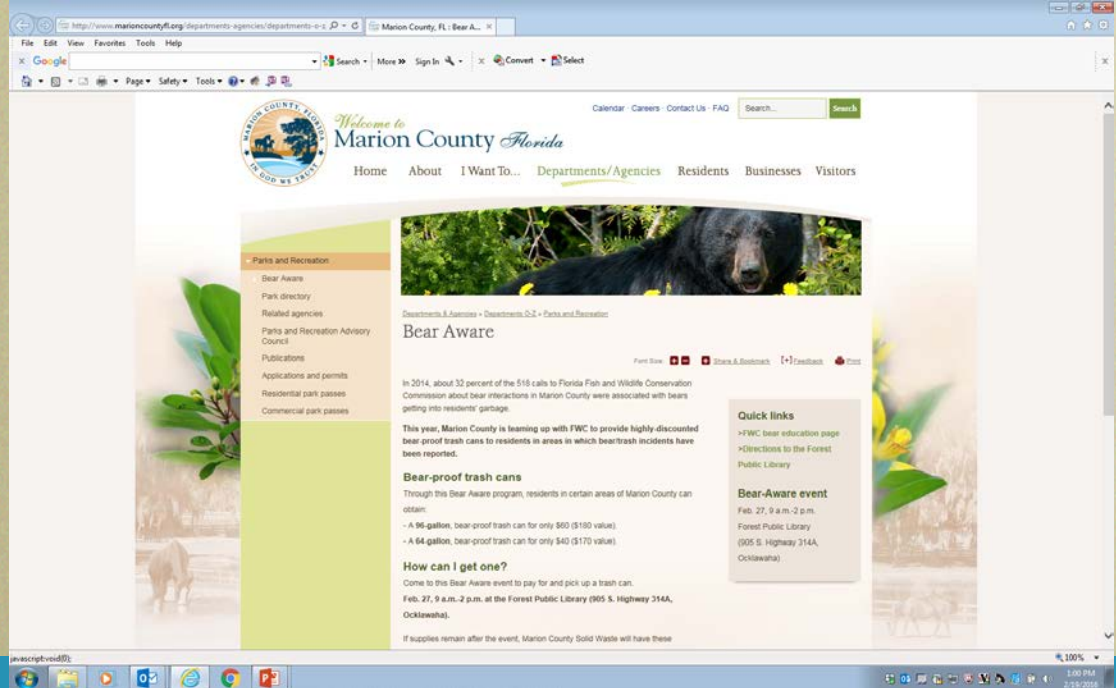
- Ensure methods to secure garbage are available
- Enact ordinances, covenants, or bylaws
- Monitor and enforce for compliance
- Work with FWC on being Bear Wise



# Working Together

- Marion County
- Collier County
- Lake County
- Franklin County
- Orange County
- Lee County
- Highlands County
- Gulf County

- State
- Counties
- Cities
- Waste Management Companies
- Residents



# Thank You

